

**CERTIFIED LAND CORNER RECORDATION**

DESCRIPTION OF CORNER EVIDENCE FOUND, AND ORIGINAL RECORD (if known)

LOCATION

Corner established by this survey.

$C\frac{1}{4}$  S. 4  
T. 14N., R. 69W.  
6th P.M.

DESCRIPTION OF MONUMENT AND ACCESSORIES ESTABLISHED  
TO PERPETUATE THE ORIGINAL LOCATION OF THIS CORNER:

Refer to sketch on reverse for monumentation of 1/16 corners in the  
 $N\frac{1}{2}$  of Section 4.

SKETCH, WITH COURSE AND DISTANCE TO ADJACENT CORNER IF DETERMINED IN THIS SURVEY.  
(May Sketch or Paste Reproduction on Reverse Side.)

Sketch on reverse.

The State of Wyoming }  
County of Laramie } SS  
This instrument was filed for record  
at 2:12 o'clock P.M. on the  
30th day of October  
A.D. 1972 and duly recorded in  
Book \_\_\_\_\_ on page \_\_\_\_\_  
By *[Signature]*  
County Clerk & Ex-Officio Registrar of Deeds  
Deputy

269804

I, R.L. Hudson certify that I have carefully performed or reviewed the work done on the diagrammed corner as reported on this recordation form and approve the same.

R.L. Hudson  
Signature of Surveyor

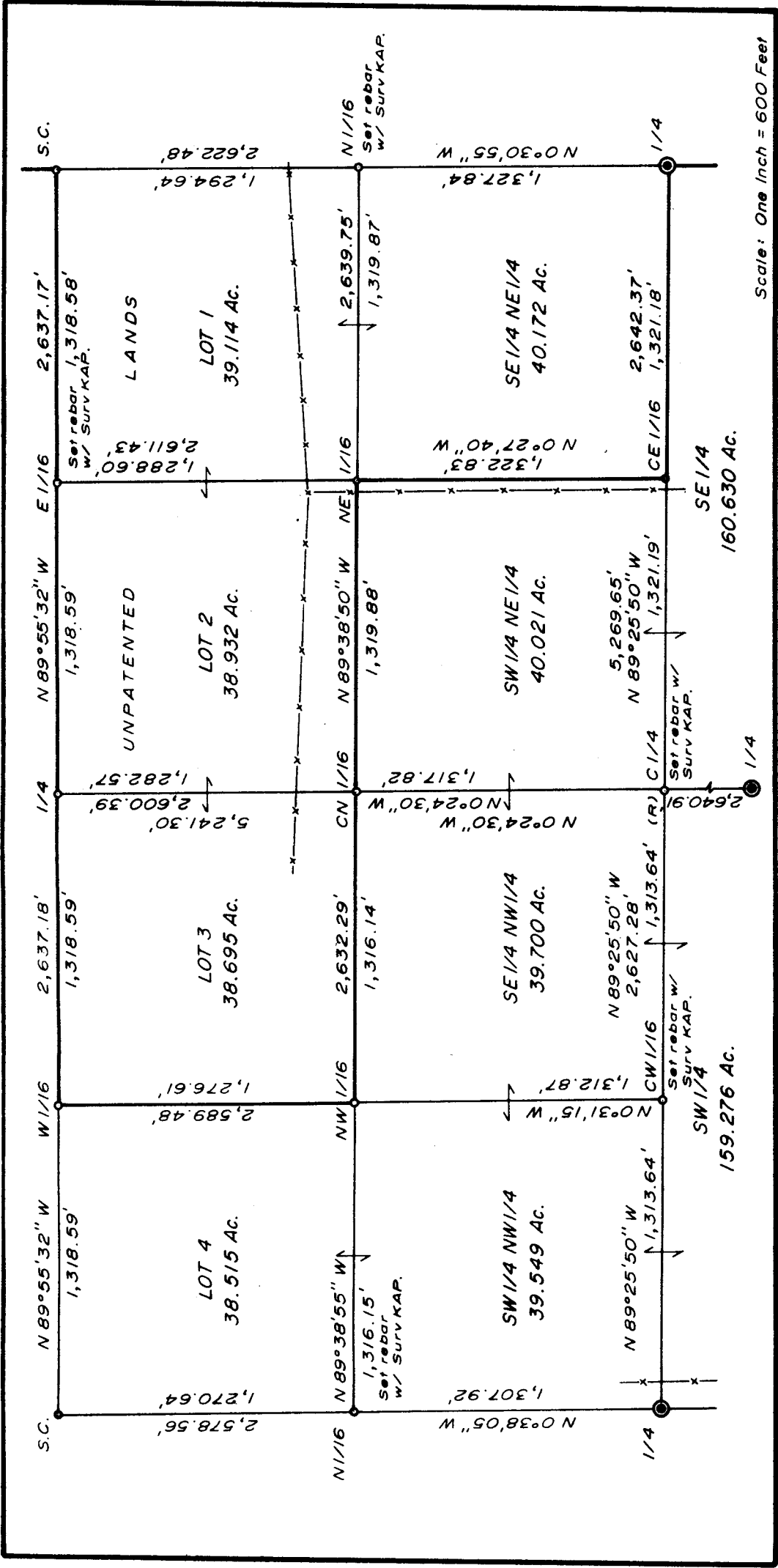
Wyoming L.S. No. 519  
Registration No.

STATE OF WYOMING,  
Office of Clerk and Recorder,  
County of Laramie

This "corner record" was filed for record on the 30th day of October, 1972, was noted on the cross-index plat and is assigned page No. 14-69, in book No. ONE.

[Signature]  
County Official

Cross Index No. _____	T. _____	R. _____	Mer. _____
_____	T. _____	R. _____	Mer. _____
_____	T. _____	R. _____	Mer. _____
_____	T. _____	R. _____	Mer. _____
_____	T. _____	R. _____	Mer. _____
_____	T. _____	R. _____	Mer. _____
_____	T. _____	R. _____	Mer. _____



INSET SHOWING SUBDIVISION OF THE N1/2 OF SECTION 4

**LEGEND**  
 O denotes 1-1/2" dia. x 30" long concrete-filled iron pipe with brass cap (except where otherwise shown) set.